



Alcohol and Drug Education

Signs of a Substance Use Disorder

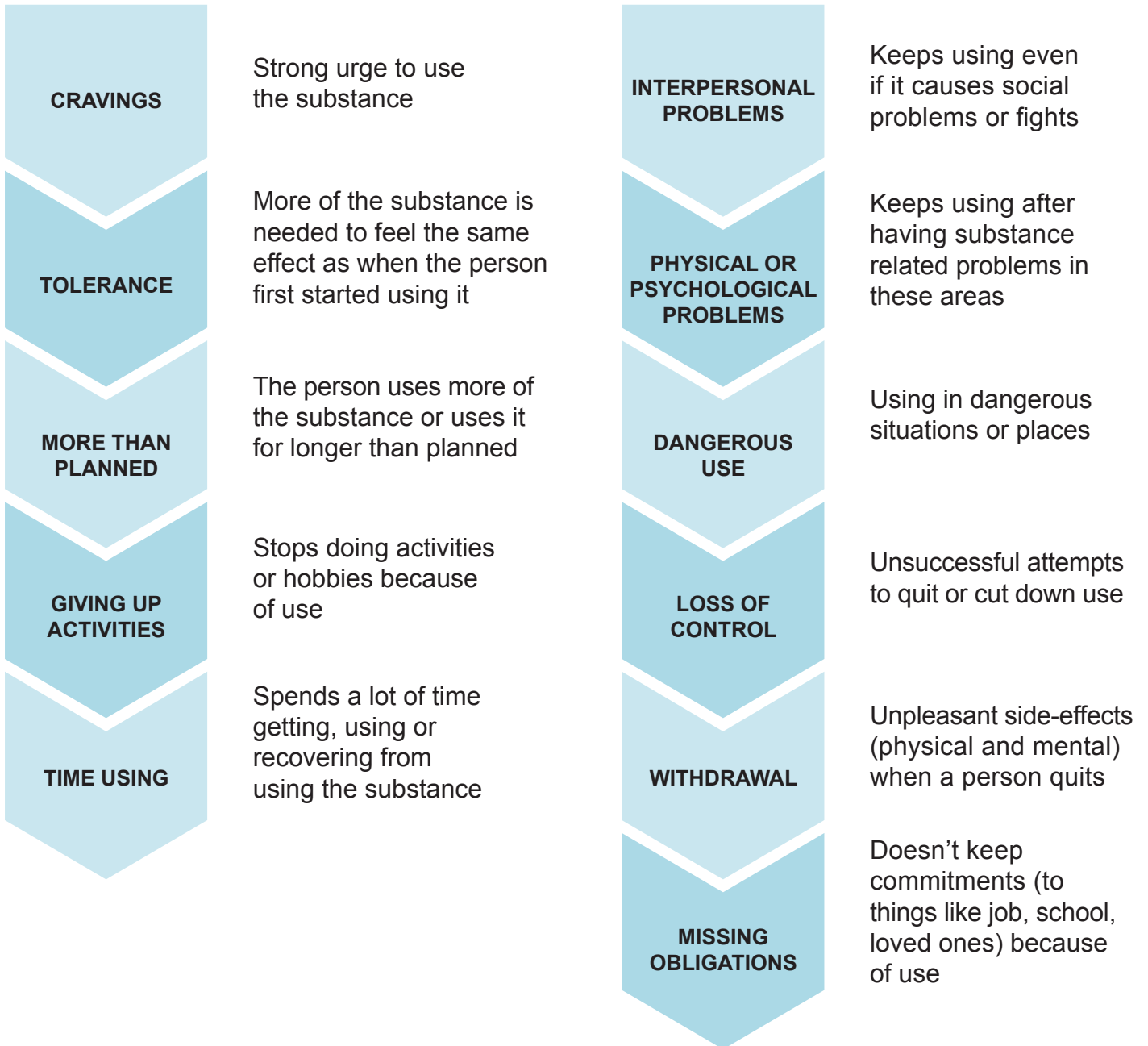
There are **three levels of substance use disorders:**

MILD: 2-3 signs

MODERATE: 4-5 signs

SEVERE: 6-11 signs

While a clinical provider must officially diagnose these symptoms, it's useful to be aware of them.



LEARN MORE:
www.veterantraining.va.gov/substances

SHARE TO X
SHARE TO FACEBOOK

